

HOW CAN YOU HELP?

The Board of Directors of the Lewisville Historical Society is seeking broad financial support from those in the region who share in this exciting vision of creating an important and far-reaching community asset in the Piedmont Triad.

Campaign volunteers are seeking gifts and suggested two-year pledges of support to meet the \$500,000 Phase I budget for restoration and adaptive re-use of the House.

Gifts of appreciated stocks can be especially helpful to both the donor and to the project, as they escape the capital gains burden. Gifts of property or other tangible assets are welcomed, as well as in-kind support such as construction materials. Gifts and multi-year pledges to the campaign may be paid monthly, annually, or as a one-time commitment. The Nissen House will require broad support from the entire community in order to attain its worthy goals.

Every gift – whether large or small – is appreciated and will be gratefully acknowledged. Please help us save and restore the Historic Nissen House. Generations to come will appreciate it!

SAVE THE HISTORIC NISSEN HOUSE!

I/we pledge to *The Historic Nissen House Campaign*:

Name (s) _____
Address _____
City, State, Zip _____

A total gift of \$ _____

Personal gift of \$ _____

Special Gift of \$ _____ Stock _____ Planned Gift – Describe: _____

Matching gift of \$ _____ from _____

(Please attach matching gift form)

First payment of \$ _____ ☐ Enclosed ☐ To be made by (Date) _____

Please bill me: ☐ Annually: _____ years, each at \$ _____ in (Month) _____

☐ Monthly in the amount of \$ _____ for _____ months

☐ Other: _____

Signature _____

Date _____

All contributions are fully tax deductible within the limits of federal and state laws.

Please make all checks payable to LEWISVILLE HISTORICAL SOCIETY and mail to:

The Historic Nissen House Campaign ■ PO Box 242 ■ Lewisville, NC 27023 ■ 336.766.8256



HELP RESTORE THE HISTORIC NISSEN HOUSE!

Located at 213 Arrow Leaf Drive
(behind the Town Hall Annex)

Lewisville, North Carolina



THE HISTORIC NISSEN HOUSE: ALMOST LOST TO DEMOLITION

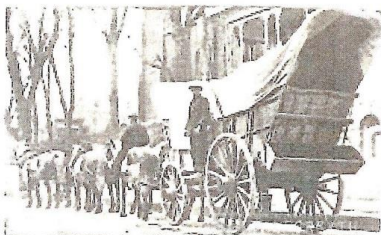
In the middle of 2008, the Lewisville Historical Society learned of plans to tear down the historic 1876 George Elias Nissen House. With the cooperation of the owners, the Town of Lewisville, and historic preservation-minded area citizens, a site on Arrow Leaf Drive – just a half block north – was acquired. The Town also provided an interest-free loan to supplement private funds being raised to save and move the structure (the loan has been satisfied).



The owners of the house not only contributed the home itself, but made a cash contribution toward its preservation. By January of 2009 the Nissen House was sitting on its new site – saved from demolition but needing restoration and preservation.

THE NISSEN HOUSE: A BIG STORY

The three-story, 2,979 square foot George Elias Nissen House, featuring Italianate and Greek Revival architecture, has eight large rooms and eight fireplaces, with many original materials still intact. It remains on original Nissen property located in the heart of Lewisville, in the Piedmont Triad. It is one of the few surviving examples of these 19th century architectural styles in Forsyth County and North Carolina. With the Lewisville Roller Mill and Laugenour House, it forms the heart of Lewisville's historical legacy.



George Elias Nissen (1839-1913), owner of large tracts of land, a sawmill, and a gristmill in the Lewisville Township in the 1870s-1880s, was the son of John Philip Nissen who founded the Nissen Wagon Works in 1834. Nissen Wagon Works was one of the most

important early industries in the Piedmont. Nissen Wagons were known for their superior quality and sound workmanship, and were instrumental in the development of the textile and tobacco industries in North Carolina, transporting raw materials and manufactured products.

WHAT WILL THE NISSEN HOUSE DO FOR THE COMMUNITY AND AREA?

When restored and opened to the public for rental use, *the Historic Nissen House will provide a unique setting for a wide variety of events, activities, and programs.* From parties, to weddings, to business meetings, to public educational forums, the house will provide historically pleasing and functionally efficient space for groups from a few to as many as 100.

It is adjacent to the Lewisville Elementary School for ready use by students, as well as others on field trips from further away. The house will provide a distinctive venue for non-profit and company retreats, as well as a wide range of community meetings.



And arts and artists can be showcased from time to time in the facility.

Adapting the interior, while skillfully preserving the historical materials and design elements still extant in the house (staircase and railing, fireplaces, wide-board pine flooring, historic doors and windows, moldings, and the like), will ensure a pleasant and distinctive setting for those who enjoy gathering in this special property. The main floor contains 1,735 square feet.

Carefully installed modern utilities – including up-to-date technological capabilities, a catering kitchen, and restrooms – will offer business and individual users a range of options for instruction, discussions, meal service, and just socializing. Furnishings are anticipated to reflect both the historical time period of the home and practical needs for modern-day activities.

Rental rates will be attractive and use of the facility will be by reservation. A paved parking lot is immediately adjacent. There is space for outside activities and tenting if desired. The large open front porch in season adds to the charming facility's special character and appeal.